

# Build Anything **Better.**<sup>™</sup>

DISCOVER A COMPLETE CONSTRUCTION SOLUTION  
WITH BUILT-IN SAVINGS, RESILIENCE  
AND COMFORT.

# LOGIX<sup>®</sup>

INSULATED CONCRETE FORMS

- 2 SMART FUNDAMENTALS
- 3 RUGGED REINFORCED CORNERS
- 4 INTELLIGENT INTERLOCK
- 5 DESIGNED FOR COMMERCIAL CONSTRUCTION
- 6 BUILT-IN SAVINGS, RESILIENCE & COMFORT
- 7 BUILD ANYTHING BETTER WITH LOGIX
- 8 EFFICIENT OUTLINE DESIGN
- 9 WALL OPENINGS — THE COMPLETE SOLUTION
- 10 SPECIALTY PRODUCT SOLUTIONS
- 11 LEADING R-VALUE SOLUTIONS
- 12 THE SOLUTION FOR ICF WALLS WITH EXPOSED CONCRETE

A PRODUCT BY

# LOGIX<sup>®</sup>

BRANDS

[LogixBrands.com](http://LogixBrands.com)



## ICF Pro-Link

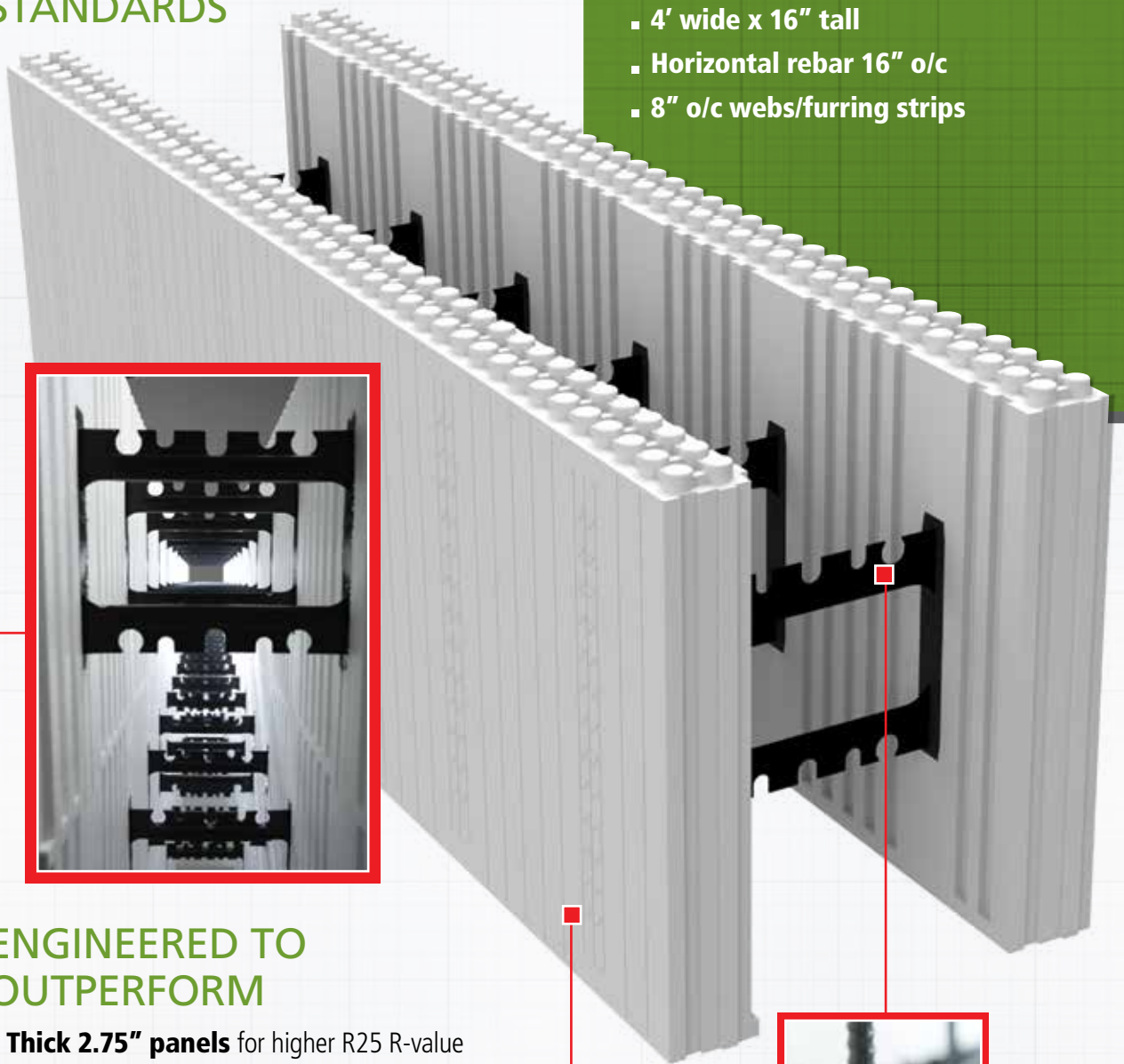
ICF Pro-Link is a database that matches incoming ICF leads with ICF-experienced installers, architects, designers and engineers.

[ICFProLink.com](http://ICFProLink.com)

888.415.6449 ▪ [LogixICF.com](http://LogixICF.com)

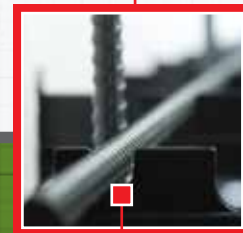
### CONFORMS WITH ACCEPTED CONVENTIONS & STANDARDS

- 4' wide x 16" tall
- Horizontal rebar 16" o/c
- 8" o/c webs/furring strips



### ENGINEERED TO OUTPERFORM

- **Thick 2.75" panels** for higher R25 R-value
- **Walls go up straighter and faster**
- **Wiring channels every 16" o/c** with no webs to cut through
- **Maximum concrete flow** to prevent voids
- **Virtually indestructible rebar holders** make one-man long bar placement easy

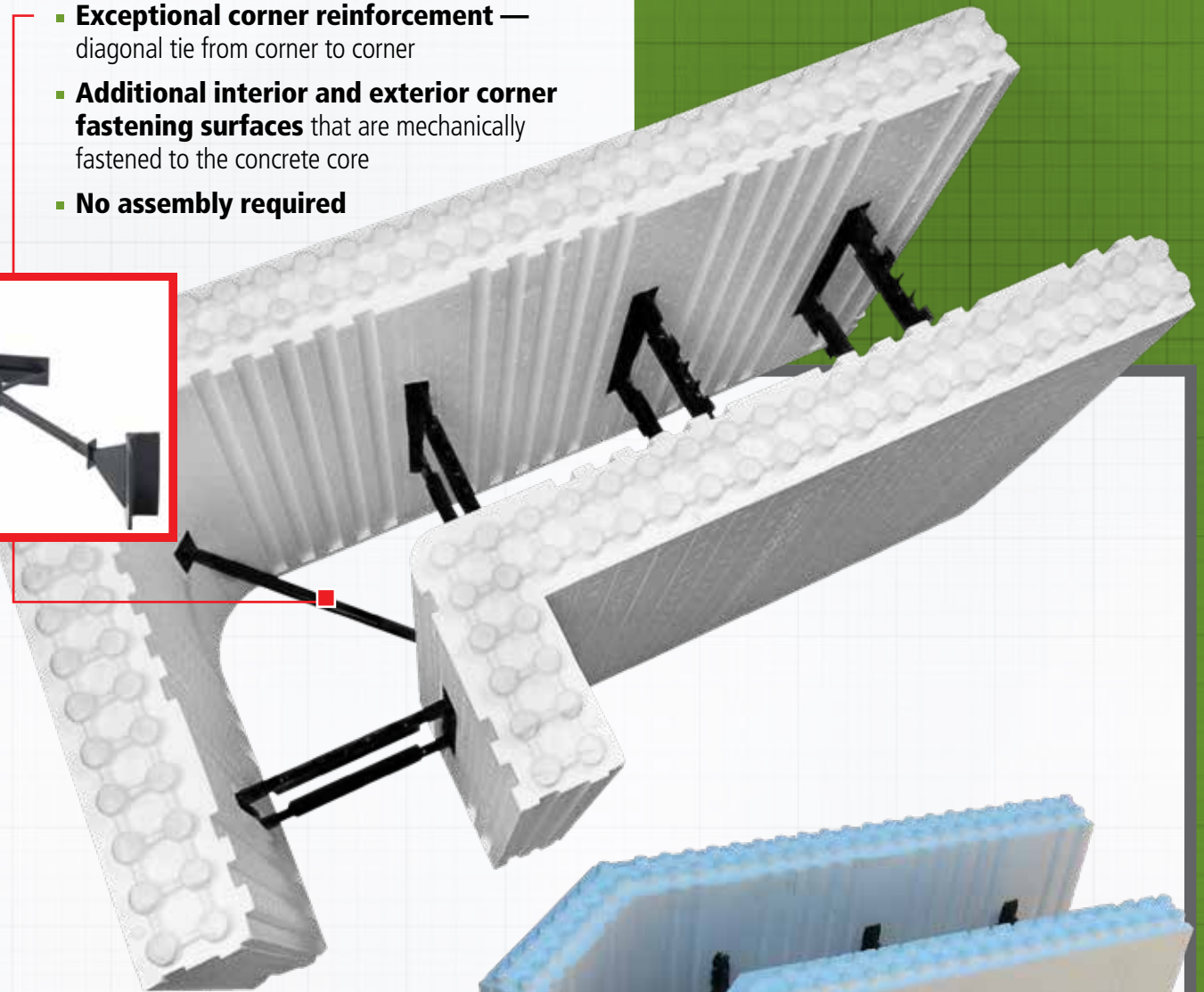


## RUGGED REINFORCED CORNERS

- **Superior form pressure resistance** provided by rugged 2.75" thick panels
- **One tie every 1.08 sq. ft.** for even more support
- **Exceptional corner reinforcement** — diagonal tie from corner to corner
- **Additional interior and exterior corner fastening surfaces** that are mechanically fastened to the concrete core
- **No assembly required**

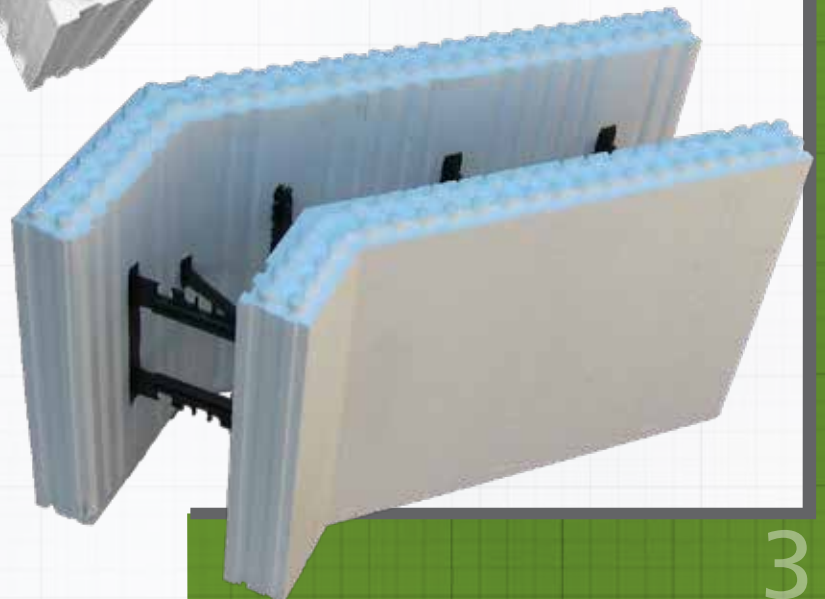
### 90 DEGREE CORNER

- **32" leg for less cutting + less waste** with short (< 2') offsets/returns



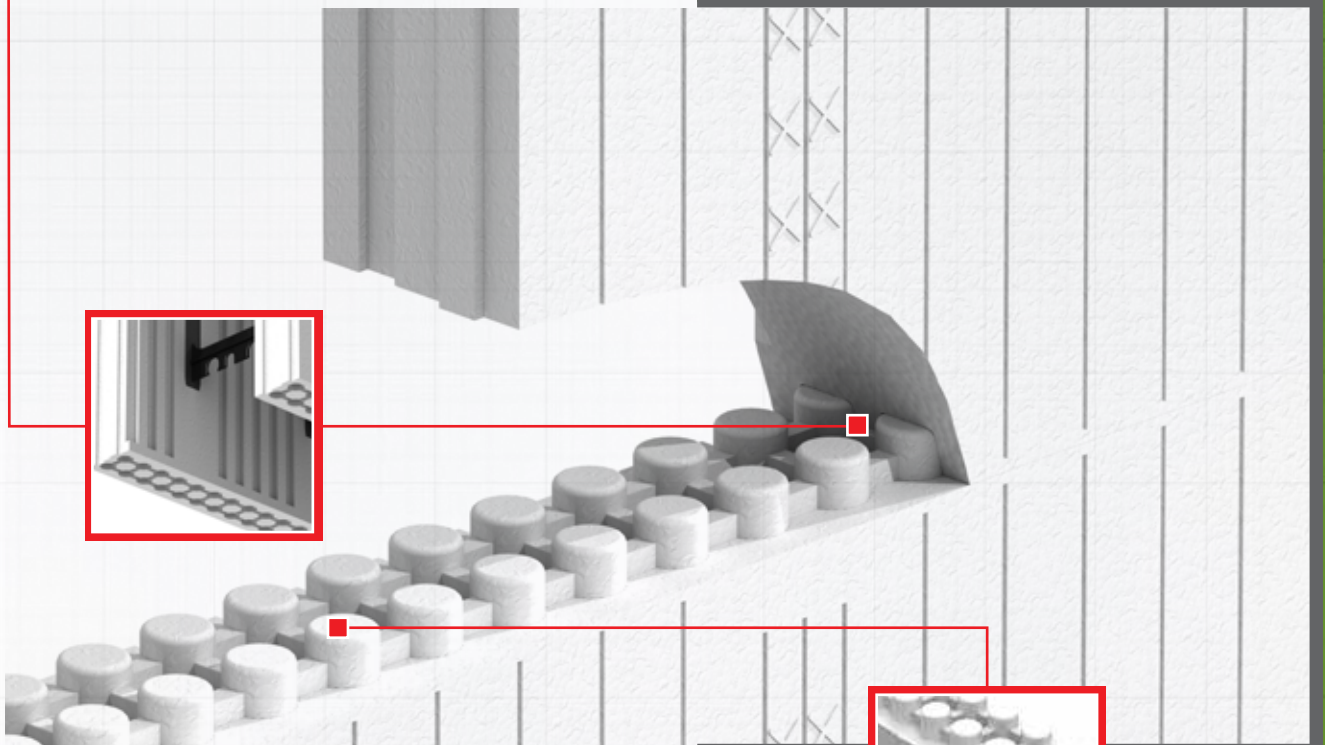
### 45 DEGREE CORNER

- **Preformed 45° corners** for a quick, easy build of unique designs



### THE LOGIX BASE PLATE

- **Maximum bearing surface**
- **No bottom nodules** to cut away at approximately \$1.50 per block
- **Yields intuitive and predictable step footing heights**
- **Minimizes compression**



### TANDEM INTERLOCK DESIGN

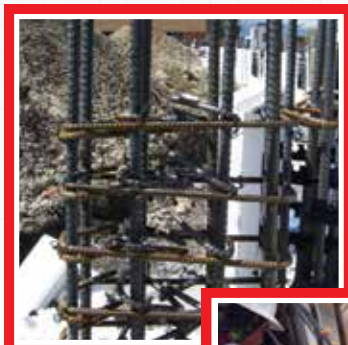
### THE LOGIX FACE PLATE

- **Maximum Friction Fit for a snug and secure interlock** — up to 32% more interlock contact!
- **Fast and easy to assemble** (and disassemble when needed)
- **No plastic, metal or locks to fight during assembly**
- **Built-in dams to seal against bleed water**
- **Sufficient bearing surface** to minimize compression

COMMERCIAL  
CONSTRUCTION IS AS FAST  
AND EFFICIENT AS 1-2-3!

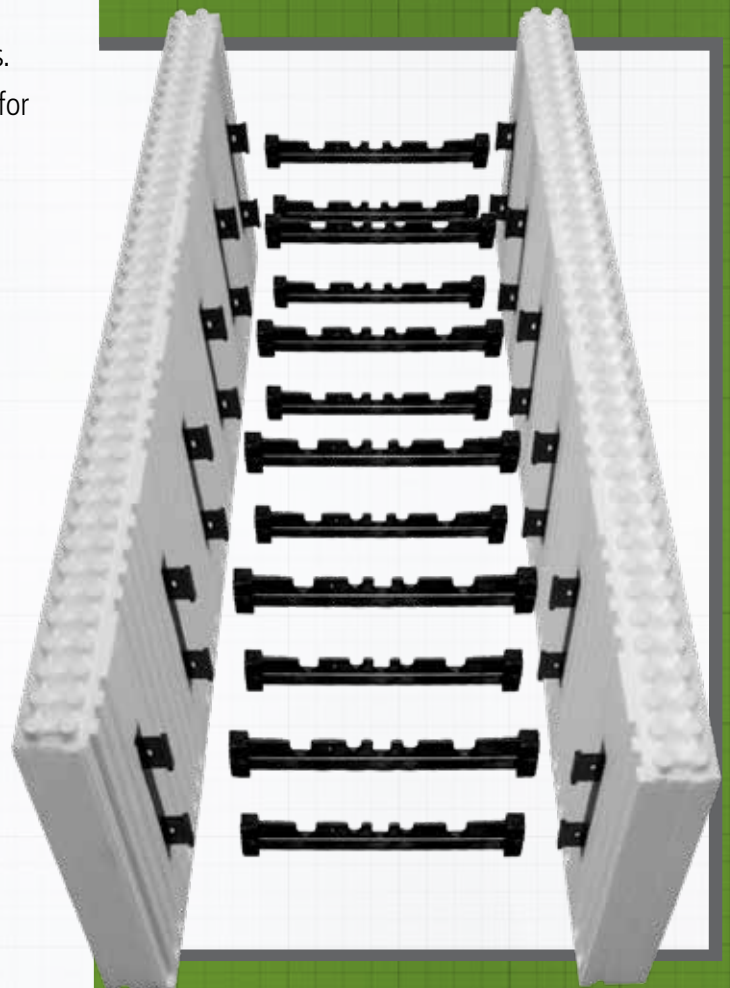
Why? Because unassembled  
Logix KD is fully compatible  
with assembled Logix Pro™.

1. Install back Logix KD panel and attach internal web connectors.
  2. Install heavy commercial rebar patterns quickly, moving web connectors around as needed.
  3. Attach front Logix KD panels to web connectors.
- Then use assembled Logix Pro everywhere else for maximum efficiency.

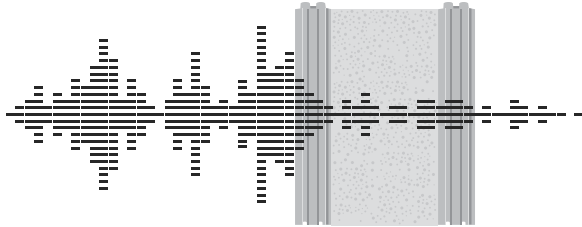


LOGIX IS PERFECTLY  
DESIGNED TO  
SEAMLESSLY  
ACCOMMODATE  
COMMERCIAL REBAR.

Other ICF brands force builders to do it backwards — and waste a tremendous amount of time and money building their complicated rebar patterns inside tight wall cavities obstructed by webs.



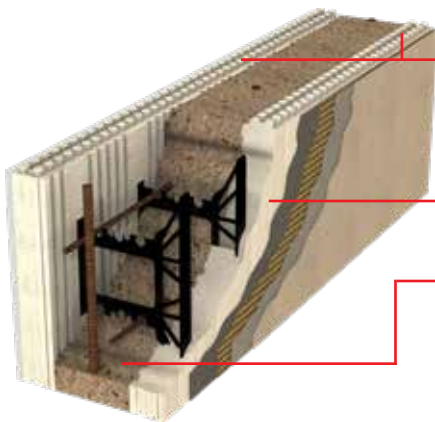
## BUILT-IN SAVINGS, RESILIENCE & COMFORT



Outside noise is reduced to a whisper.

### BUILT-IN COMFORT!

- Drafts and cold spots in the home are eliminated in northern climates.
- Humidity is easily controlled in warm, moist climates.
- EPS foam and concrete do not off-gas unhealthy, allergy-aggravating remittances.
- No nutrient source exists in the Logix wall assembly for unhealthy mold growth.



1. Two 2.75" thick panels of continuous foam insulation.
2. An air-tight wall assembly.
3. The temperature moderating thermal mass of concrete.

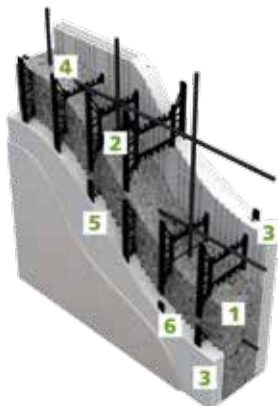
### BUILT-IN ENERGY-SAVERS!

THREE built-in energy-saving elements deliver up to 50% energy savings.



### BUILT-IN RESILIENCE!

- **Wind Protection** — Wind-rated to over 300 mph
- **Fire Protection** — 4-hour fire rating
- **Earthquake Protection** — Engineering available for all seismic zones
- **Moisture Protection** — Does not rot!



1. Concrete
2. Steel Reinforcement
3. Insulation
4. Air Barrier
5. Vapor Barrier
6. Furring Strips

### BUILT-IN COST-SAVINGS!

Six construction steps. One simple package.

- = Less labor
- = Lower construction costs
- = Faster builds



- BASEMENTS
- COMPLETE HOMES
- HIGH PERFORMANCE HOMES
- MID-RISE MULTI-FAMILY BUILDINGS
- COMMERCIAL BUILDINGS
- SCHOOLS
- ASSISTED LIVING FACILITIES
- DISASTER RESILIENT HOMES & BUILDINGS
- OTHER SPECIALTIES



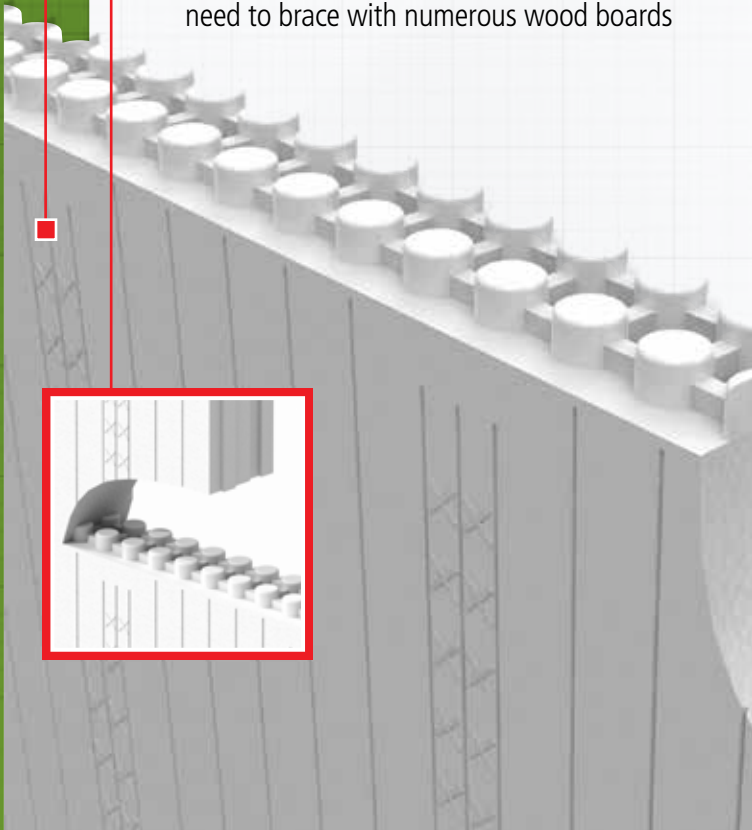
FOR COMPREHENSIVE  
SUPPORT, VISIT  
[LOGIXICF.COM](http://LOGIXICF.COM).

- **2x more cutlines than most ICFs**
- **2x the ability to cut on a cutline**
- **2x the chance to preserve the interlock**
- **With efficient running bonds, there's no need to brace with numerous wood boards**

LOGIX GIVES YOU  
CUTLINES EVERY 1".

THAT'S TWICE THE  
NUMBER OF MOST  
OTHER BRANDS.

It's always better to cut on a cutline. That's why every brand has them — but Logix gives you more!



Many other ICF brands have only 2" cutlines — that's only half the number of cutlines you get with Logix ICF.

The cutlines in other brands are so infrequent, in fact, that it's often not worth trying to cut on one at all!

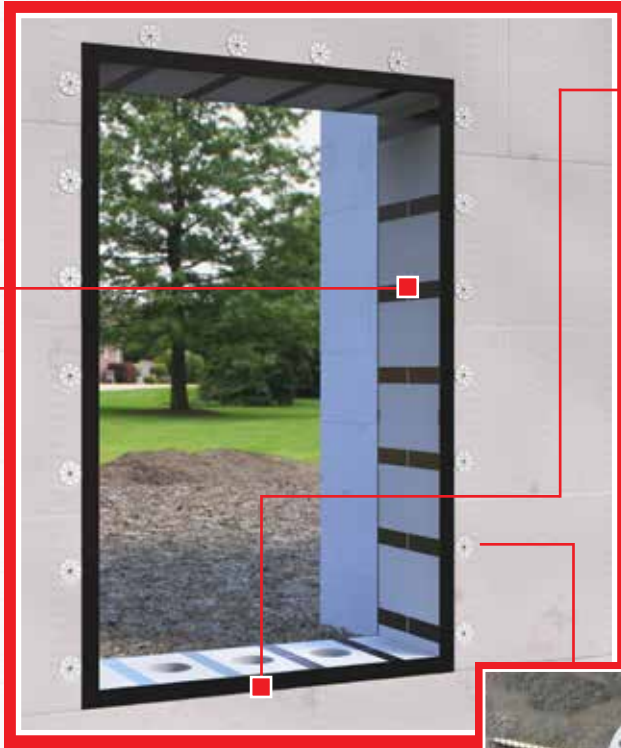


That's also why other brands recommend labor-intensive stack seams braced with wood in EVERY wall section. And what they don't tell you is that every 9' stack bond (which needs to be braced on both sides and then the wood removed after the pour) has a hidden time and materials cost of up to \$70 per, adding \$100s to the cost per floor.

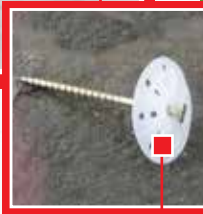


## WALL OPENINGS THE COMPLETE SOLUTION

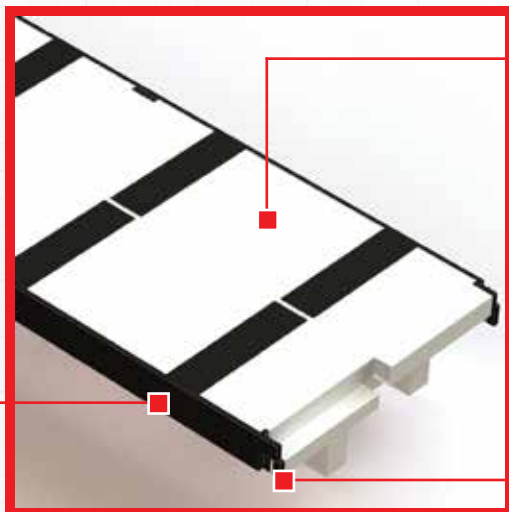
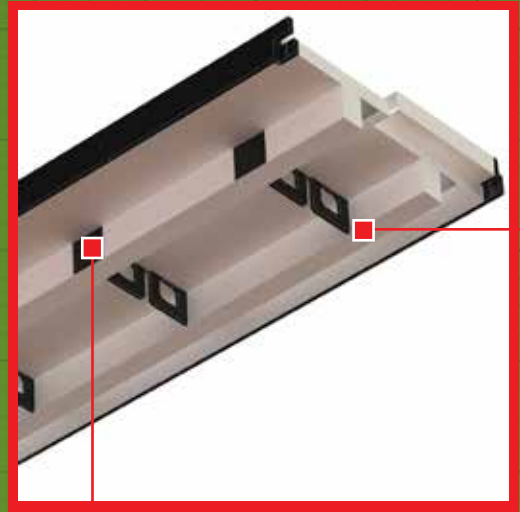
### LOGIX PRO BUCK™



- **Strong, secure, reliable fastening** — high-strength exposed furring strips
- **Fast picture framing to the internal flanges every 8" o/c** (that do not have to be removed for finishing!)



- **Concrete anchors every 8" o/c** ensure a solid connection to the concrete wall and provide a chair for horizontal rebar placement
- **Easy, void-free concrete placement under the opening** — foam-only areas for 4" access holes



- **Strong, dependable, insulating foam** — high-density 2 lb. foam
- **Minimal waste** — leftover pieces securely clip together end-to-end, generating minimal waste

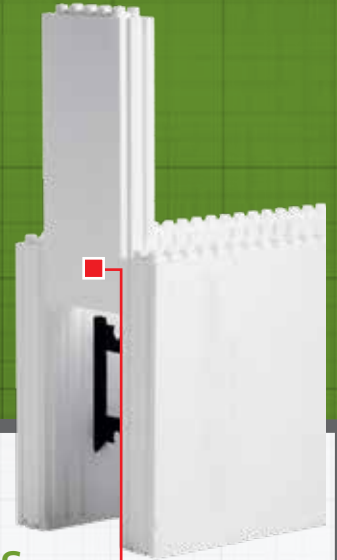
**WATCH THE VIDEO**

### PICK A WIDTH

- Available in concrete core widths of 4" to 12" (+ even wider with the Xtender Clip)
- Extended Brickledge, Taper Tops and Double Taper Tops (available in all widths)



- Save real time and money on the job site
- Across a large variety of concrete core widths (not just 6" and 8")

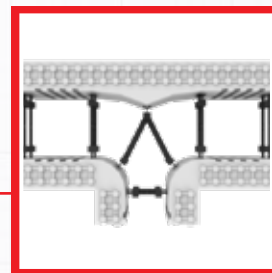
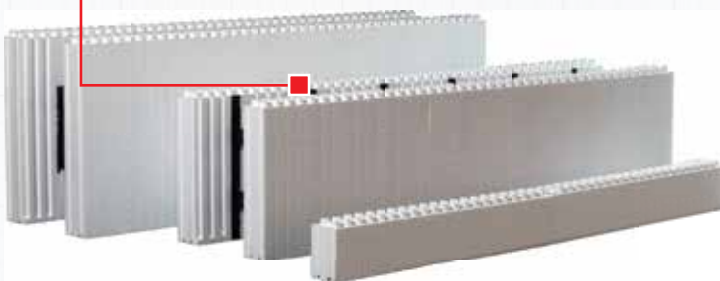


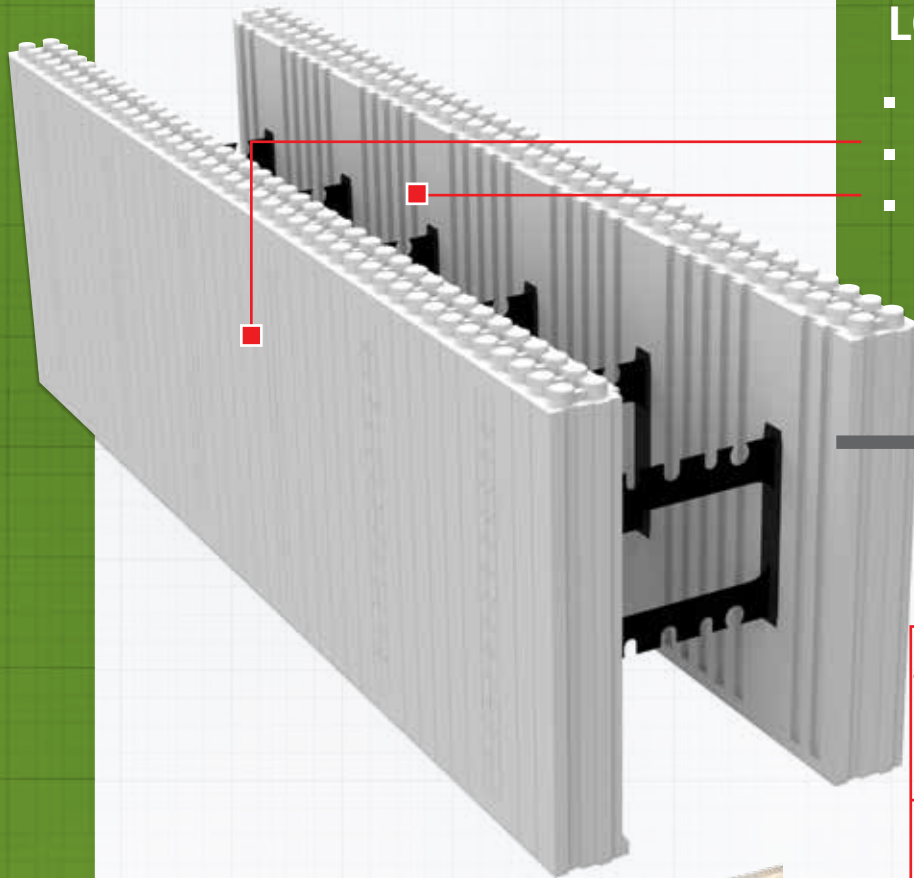
### SPECIALTIES INSTALL FAST

- **Logix End Caps** — terminate walls FAST!
- **Pilaster Blocks** — form pilasters in tall walls FAST!
- **T-Blocks** — form T-Walls FAST!

### PICK A HEIGHT

- Use 12" high Logix V12 and 4" high Height Adjusters to hit ANY 4" height increment without cutting a block



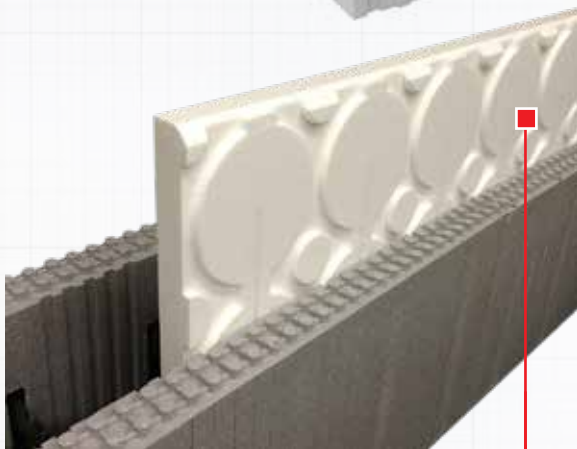


### LOGIX PRO<sup>™</sup>

- Our flagship product line
- 2.75" thick foam panels
- Superior R25 wall assembly

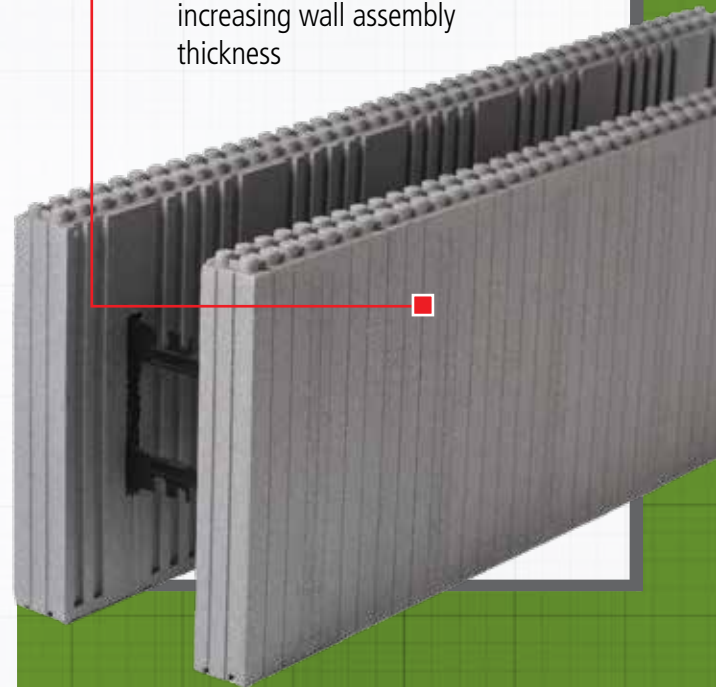
### LOGIX PLATINUM SERIES<sup>®</sup>

- Made with Neopor<sup>®</sup> by BASF<sup>®</sup>
- R-value enhanced with graphite infrared reflectors and heat absorbers
- Delivers a full R28 without increasing wall assembly thickness



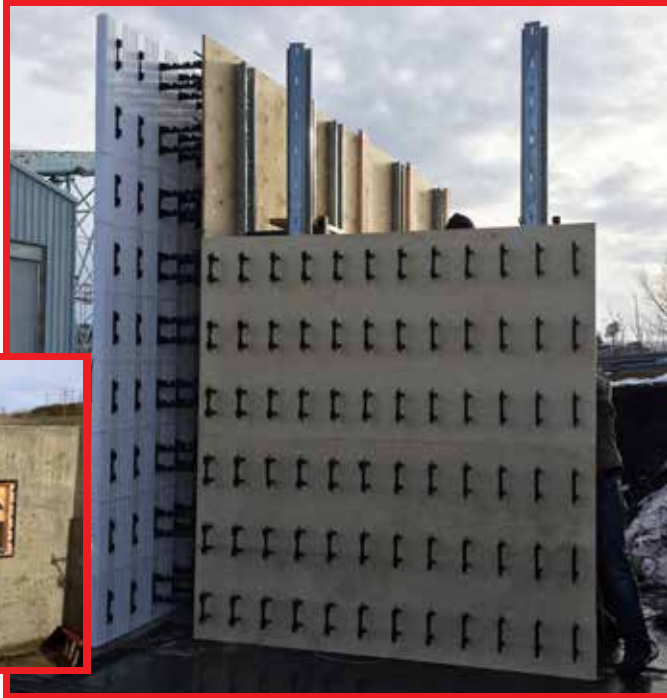
### LOGIX D-RV<sup>®</sup>

- Efficient slide-in panel
- Delivers an optional drainage plane
- Increases wall assembly R-values to R33 – R37
- Can also be used to reduce sound



## THE SOLUTION FOR ICF WALLS WITH EXPOSED CONCRETE

### LOGIX XP-1™



### DESIGNED FOR MAXIMUM SIMPLICITY, EFFICIENCY, SPEED AND VERSATILITY

- XP-1™ is self-aligning and forgiving
- The 4' x 8' plywood sheets are reusable
- The 10 available wall thicknesses allow for the seamless integration of XP-1™ walls with many regular ICF and bare concrete walls

### ENGINEERED FOR SUPERIOR STRENGTH AND STABILITY

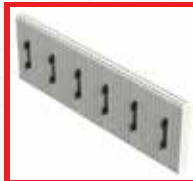
- 4' x 8' plywood sheets minimize the number of seams and create a secure auto-offset
- Fool-proof and code-compliant rebar coverage is designed right into the XP-1™ system



### INTELLIGENTLY IMAGINED TO MINIMIZE COSTS

- The ONLY parts ordered through Logix are:

KD Panels



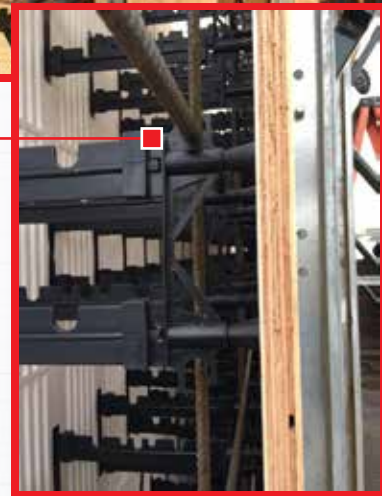
KD Connectors



XP-1™ Side Webs



XP-1™ Cones



All 4' x 8' plywood sheets and screws are purchased **LOCALLY!** Needless freight charges and mark-ups are eliminated.