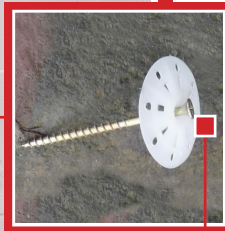


## WALL OPENINGS

### THE COMPLETE SOLUTION

## Logix Pro Buck™



- **Concrete anchors every 8" o/c –**

To ensure a solid connection to the concrete wall

These anchors also provide a chair for horizontal rebar placement.

- **Enables easy, void-free concrete placement under the opening.**

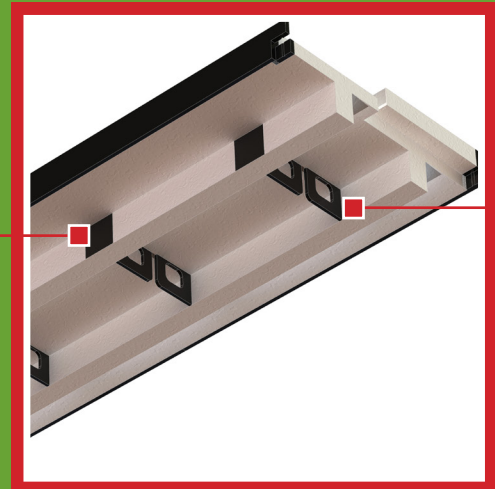
Foam-only areas for 4" access holes

- **Strong, secure, reliable fastening –**

High-strength exposed furring strips

- **Fast picture framing to the internal flanges every 8" o/c –**

That does not have to be removed for finishing!

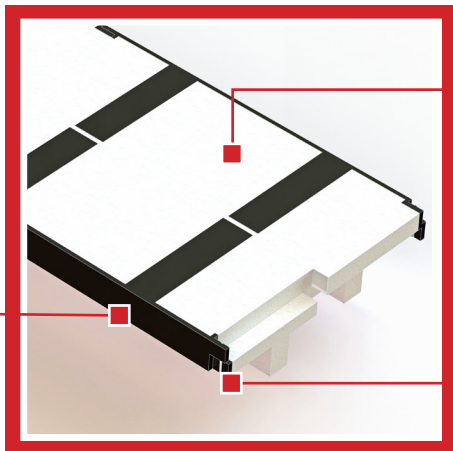


- **Strong & dependable insulating form –**

High-density 2lb foam

- **Minimal waste –**

Leftover pieces securely clip together end-to-end, generating minimal waste



WATCH THE VIDEO